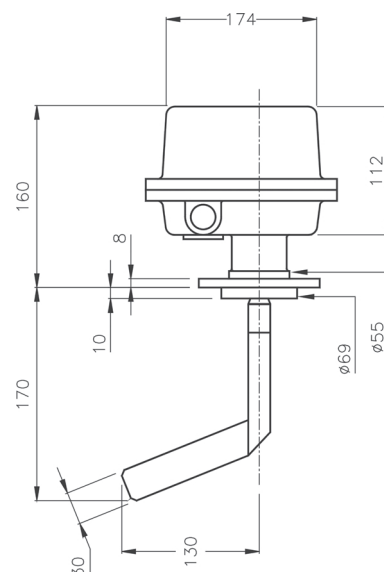
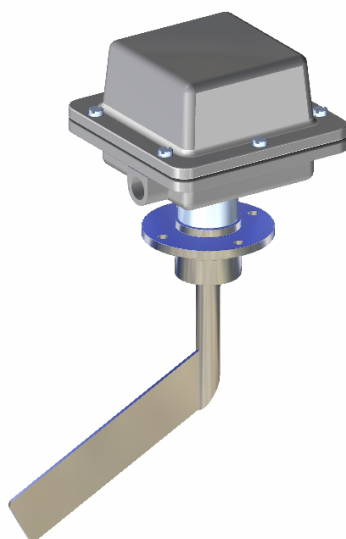
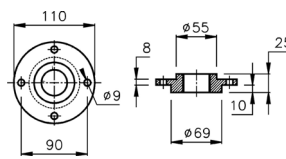
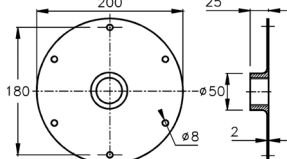
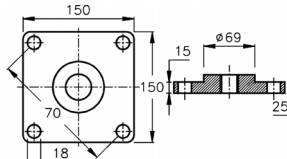
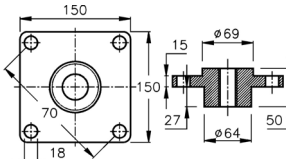


CNPR - R

LEVEL SWITCH BY ROTARY PADDLE



Function	Control of the maximum, minimum or medium level for materials in bulk, in silos, hoppers and tanks.
Operating principle	It is based in a synchronus moto reducer of slow speed which makes the paddle turning continously. When the product reaches the paddle a spin resistance is produced and the micro-switch operates. When the paddle gets free of product, the moto reducer recover the spin speed and releases the micro-switch.
Body and cover	Aluminium.
Paddles and axis	Stainless steel AISI-316.
Process connection	By flange or screw 1"1/4 Gas.
Moto reducer	1 RPM
Micro-switch	SPDT (15A 250V)
Timing	2 s., off delay.
Operating temperature	-20°C +80 °C
Pressure	< 5 Kg/cm ²
Protection	IP 65. StEx Zona 10 also available.
Cables input	One PG11 threaded hole.
Weight	From 2,5 to 3 Kg., depending on paddles or flange.
Installation	It must be installed in such a position that the product reach the paddle with no obstacles when the tank gets full. The paddle must became free when the product goes below it.
Warning	It is suggested to place a protective cover over the paddle if the product can fall on it.

	BRR-25	BRR-25	BRCA-25	BRCA-50
Mounting flange	 (Aluminium)	 (Stainless steel AISI-316)	 (Aluminium)	 (Aluminium)

Rev. 00 - 09/11/04 - DISIBEINT reserves the right to modify the specifications stated in this document without previous notice