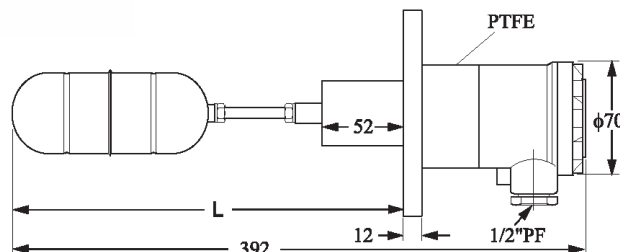
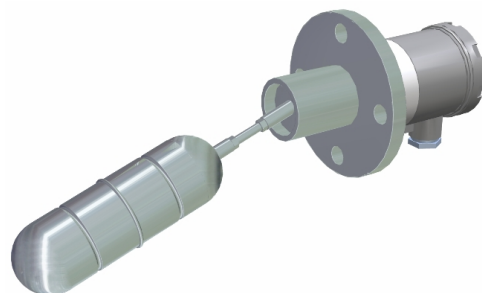


INML 20 BC

SIDE MOUNTING FLOAT SWITCH

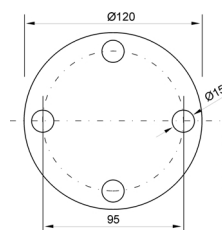


Application field Are specially manufactured for the the horizontal mounting in tanks or vessels. They can work as control of maximum or minimum level with most of the liquids.

Operating principle The float moves up and down according to the level of the liquid, switching at the same time the reed switch placed in the housing.

Process conection

Flange
1"1/2 x 5 Kg/cm²



Output Reed contact 40W / 250VAC

Density 0,65 g/cm³

Temperature -25..+200°C

Pressure 30 kg/cm²

Float ø50 x 150 mm

Material Stainless steel AISI304

Box material Aluminium

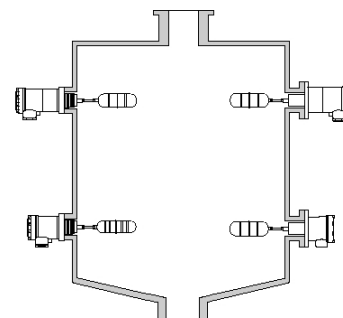
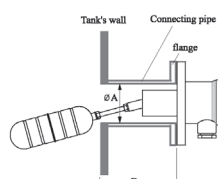
Length 270 mm

Box protection IP65

Weight 1,8 kg

Installation The cable gland must face downward to prevent moistuer sipping in.
The float and the extension rod must be inserted into the pipe completely.
Every time it could be possible, do not mount the switch near to the tank's inlet or outlet.
The diameter of the mounting pipe must be larger than the external diameter of the float, and its length is in a direct ratio (see table).

ø A (mm)	45-50	50-55	55-60	60-65	65-70
B (mm)	130	140	150	160	170



Rev. 01 - 25/05/07 - DISIBEINT reserves the right to modify the specifications stated in this document without previous notice