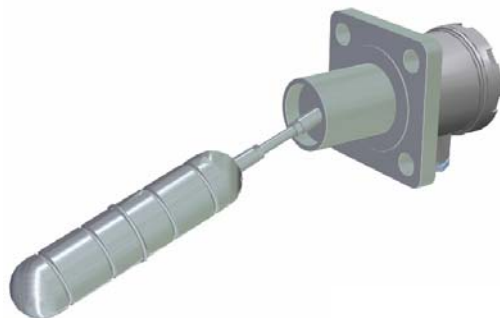
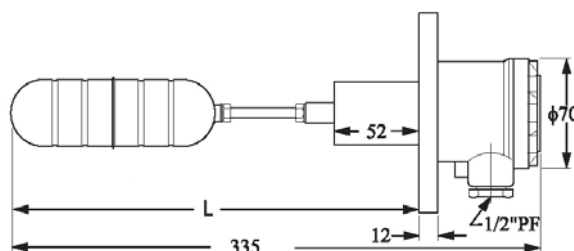


INML 10 BQ

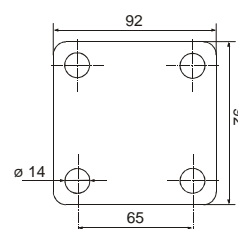
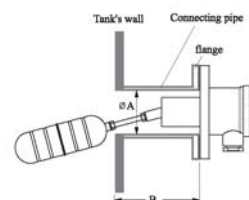
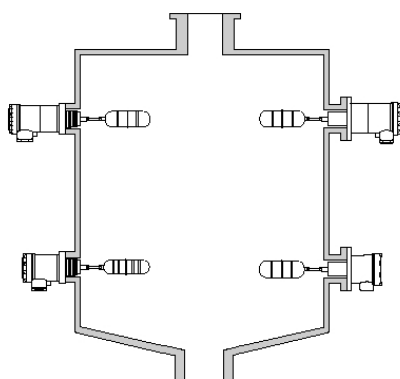


SIDE MOUNTING FLOAT SWITCH



Application field	Are specially manufactured for the the horizontal mounting in tanks or vessels. They can work as control of maximum or minimum level with most of the liquids.
Operating principle	The float moves up and down according to the level of the liquid, switching at the same time the micro-switch placed in the housing.
Process conection	Square flange, 92 x 92 mm (See table).
Output	Micro-switch 5A / 250VAC
Density	0,65 g/cm ³
Temperature	-10..+100°C
Pressure	15 kg/cm ²
Float	ø41 x 150 mm
Material	Stainless steel AISI304
Box material	Aluminium
Length	270 mm
Box protection	IP65
Weight	1,3 kg
Installation	<p>The cable gland must face downward to prevent moistuer sipping in.</p> <p>The float and the extension rod must be inserted into the pipe completely.</p> <p>Every time it could be possible, do not mount the switch near to the tank's inlet or outlet.</p> <p>The diameter of the mounting pipe must be larger than the external diameter of the float, and its length is in a direct ratio (see table).</p>

ø A (mm)	45-50	50-55	55-60	60-65	65-70
B (mm)	130	140	150	160	170



Flange dimensions

Rev. 00 - 18/05/04 - DISIBEINT reserves the right to modify the specifications stated in this document without previous notice