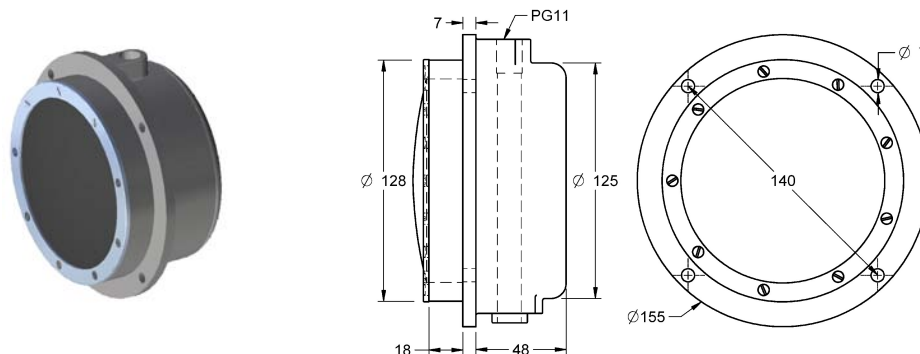


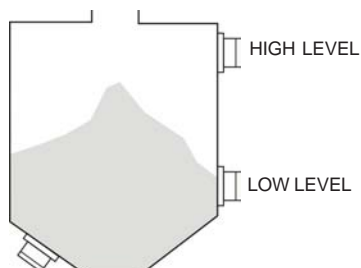
## CNM 30 / CNM 30 Ex

### LEVEL CONTROL FOR SOLIDS



Application field	Controller by membrane for the level control of materials in bulk of easy flow, at atmospheric pressure.
Operating principle	<p>The membrane must be in touch with the material to be controlled.</p> <p>As the material that enters the silo accumulates and covers the membrane, the pressure that exerts the material pushes back the membrane pressing the mechanism that drives a switch.</p> <p>This switch is used to operate visual or acoustic signals, or to start the loading and unloading mechanisms in silos and containers.</p>
Body material	Reinforced plastic. Aluminium on request.
Membrane	Standard nitrile. Neoprene, viton, stainless steel, etc., on request.
Operating temperature	-20...+80°C
Protection	IP50. With joint in the cover, IP53. Optional ATEX.
Pressure	<p>Standard 60g.</p> <p>On request 10 g. 25 g. adjustable sensibility to 60..1000 g.</p> <p>With stainless steel membrane, adjustable sensibility from 150..2000g.</p>
Output contact	SPDT Micro-switch 10 A 250 VCA
Cables input	Threaded hole for PG11 in the top side.
Sensibility	<p>Moving the holding support to the central part, the material must push strongly for acting the switch.</p> <p><b>Models with adjustable sensibility:</b> By adjusting the nut of the regulation mechanism, the material must push strongly or weakly for acting the switch.</p> <p><b>Models with pressure to 10 g.:</b> It is not recommended to adjust the sensitivity. They are pre-adjusted to the maximum sensibility.</p>
Installation	These equipments must be installed with the membrane in vertical position to assure the release of the switch when the tank become empty.

Installation



Connection example

