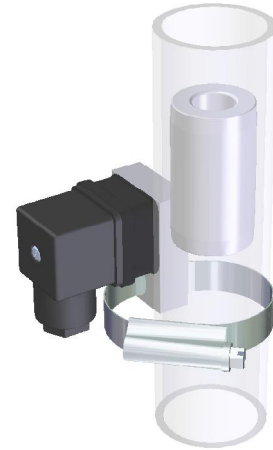
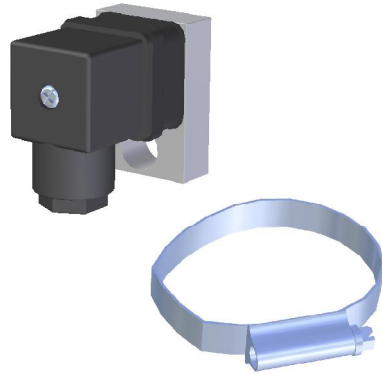


## BPCBA

### LEVEL SWITCH BY FLOAT



The float is provided separately

Application	Detection of the level in pipelines or by-pass sensors. The activation of the contact is made by a float located inside the tube.
Function	When the float, driven by the action of the liquid reaches the height of the contact, it switches its state and stays there until the float drops.
Output	Bistable reed contact 40W/VA - 2A/230 VAC
Type of contact	NO or NC according to the position of the set (see section "Installation")
Electrical connection	By DIN 43650 connector
Material	PVC. Grey
Operating temperature	60 °C
Protection	IP65

		TUBE Ø50 mm	
<b>Sensor</b>	Reference	<b>BPCBA-50</b>	
<b>Float</b>	Reference	<b>FCPP06M18</b>	The float is optional and must be ordered independently.
	Dimensions (DxL)	Ø38x60 mm	
	Material	PP	
<b>Clamp</b>	Ø Application (D)	40..60 mm	The clamp is supplied with the sensor.
	Material	SS AISI304 (1.4301)	
	Screw	SS AISI304 Cu	
	Tightening torque	7,0 Nm	
	Pressure	20 Bar	

Sensor	Float	Attachment clamp

## Installation

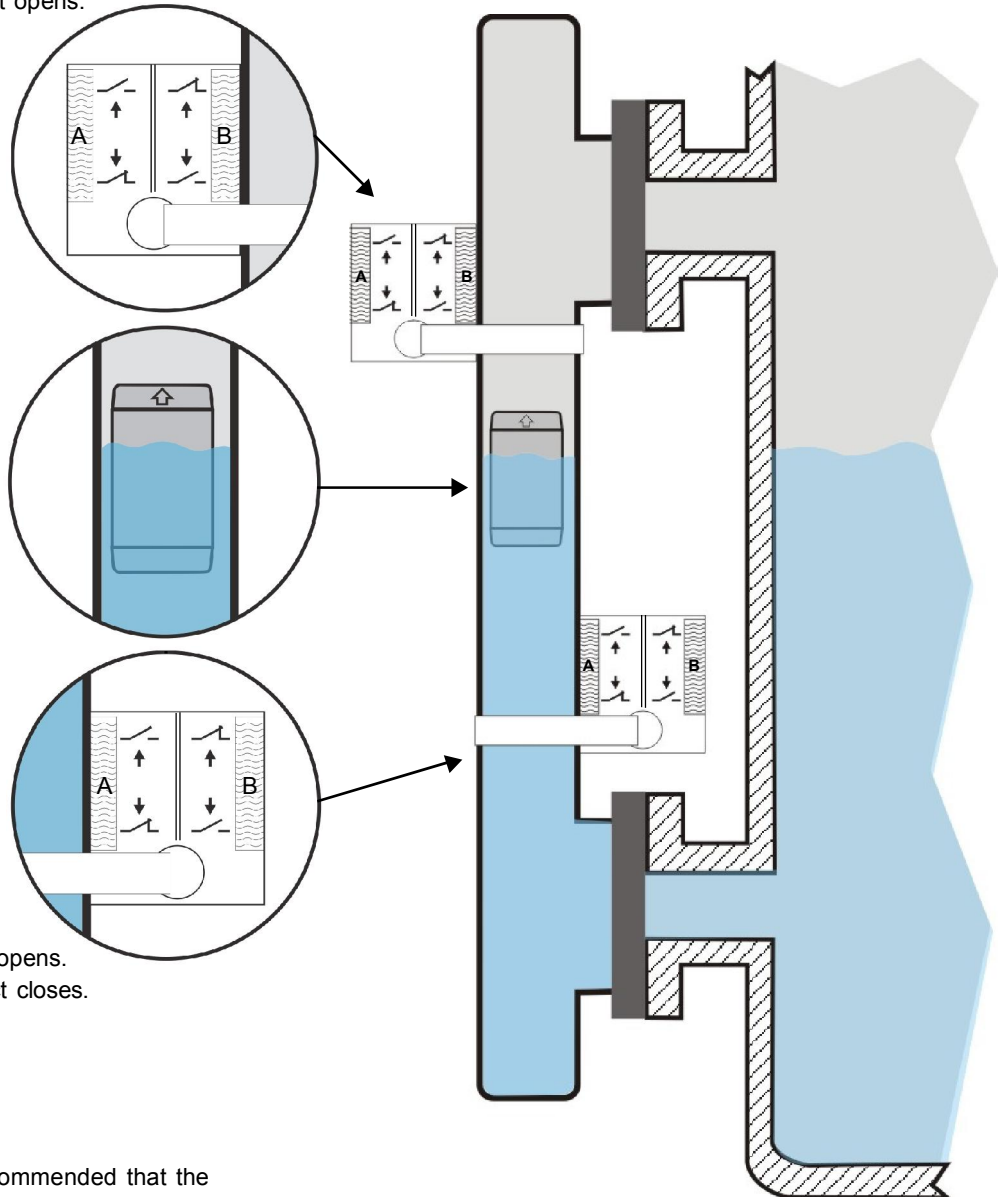
The BPCBA sensor is installed in tubes of the appropriate diameter, placed at the height where you want to detect the level. Should always be mounted with the attachment clamp at the bottom side. The detection point corresponds approximately to the middle of the sensor body.

The right or left side of the sensor should be in contact with the tube, depending on the operation you want to perform. The state of the contacts is shown at the ends of the sensor body, being valid in each case the side in contact with the tube:

- Leaning side B: By raising the level, the contact closes. By lowering the level, the contact opens.
- Leaning side A: By raising the level, the contact opens. By lowering the level, the contact closes.

The float should always be mounted with the symbol  pointing toward the top of the tube where it is housed.

By raising the level, the contact closes.  
By lowering the level, the contact opens.

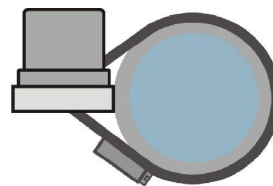


It is essential to maintain the float with the arrow on the top.

By raising the level, the contact opens.  
By lowering the level, the contact closes.



It is recommended that the output connector cable be down to protect it from an eventual entry of liquids.



Top view of sensor installed in the tube